



Sunday 17th June, 2018

Parish Priest: Fr. Steven Rigo

Assistant Priests: Fr. Dong Tran & Fr. Tao Pham

Pastoral Associate: Jacinta Bright

Pastoral Workers: Sr. Margaret Sapsford and Christina O' Connor

Sacred Heart, St. Mary's & St. Thomas the Apostle are all members of the Diamond Valley Deanery. www.diamondvalleydeanery.org.au; Catholic Archdiocese of Melbourne: www.cam.org.au

The Partnered Parishes of:

<u>St. Mary's</u>	<u>Sacred Heart</u>	<u>St. Thomas the Apostle</u>
204 Grimshaw St., Greensborough, 3088	25 Gipson Street, Diamond Creek 3089	251 Diamond Creek Road, Greensborough Nth 3088
Parish: 9435 1543	Parish: 9438 1159	Parish: 9434 7373
Presbytery: 9432 2515	Email: DiamondCreek@cam.org.au	Email: greensboroughnorth@cam.org.au
Email: Greensborough@cam.org.au	Website: www.pol.org.au/diamondcreek	Website: www.pol.org.au/greensboroughnorth
Website: www.pol.org.au/greensborough	Secretary: Pat Guatta	Secretaries: Mary Gargan & Lisa Leahy
Secretaries: Frances Olofsson & Sharon Prosser	Mass Times	Mass Times
Communications Officer: Denise Chang-Faux	Monday: Communion Service 9.15am	Tuesday & Thursday: Mass 9.15am
Mass Times	Wednesday & Friday: Mass 9.15am	Saturday: Vigil Mass 6.00pm
Monday: Liturgy of the word 9.15am	1st Saturday of the month: Vigil Mass at St. Peters Hurstbridge 7.15pm	Sunday: Mass 10.30am
Tuesday to Friday: Mass 9.15am	Sunday: Mass 9.00am	Reconciliation Times
Saturday: Mass 8.30am & Vigil Mass 6.30pm	Reconciliation Times	Saturday: 9.30am to 10.30am
Sunday: Mass 8.00am, 10.00am & 5.00pm	Parish School Principal	Parish School Principal
Reconciliation Times	Friday: 9.45am to 10.15am	Mr. David Delaney Ph: 9434 4565 or Email
Saturday: 9.00am & 5.45pm	Parish School Principal	Principal@stgreensboroughnth.catholic.edu.au
Baptisms	Mr. Jim O'Sullivan Ph: 9438 1590 or Email	
2nd & 3rd Sunday 11.30 am. Please see Fr. Steven or Fr. Dong to make the necessary arrangements after any Mass on Sunday or Saturday evening.	principal@shdiamondcreek.catholic.edu.au	
Parish School Principal		
Mrs. Helen Anderson Ph: 9433 4000 or Email		
principal@smgreensborough.catholic.edu.au		

Communion to the Sick:

Any parishioner who cannot attend Mass due to illness and would like to receive Communion is asked to contact the parish office.

The Kingdom of God

The references to the Kingdom of God in the Gospels always carry a paradox. It exists in the present, yet is something to be achieved in the future. It is here, but not yet. If we live 'as if' we are living in the Kingdom here and now then we hasten its coming. The Kingdom of God is not a place but a way in which the world operates.

It is a Kingdom that is ruled by justice and gives precedence to those who are regarded as nothing in the world. It is a kingdom of promise and hope that inspires and calls all people to more than they currently are.



Creative Ministry Resources Pty Ltd

Our Partner Parishes respectfully acknowledge the Wurundjeri people who are the traditional custodians of this land and we pay respect to the Elders past and present.

Bookings for Hall , James Kierce Centre, Parish Club Rooms— via Parish Office: greensborough.bookings@cam.org.au/9435 1543.

Parish Office Hours: Mon, Wed, Thurs, Fri, 10am –4pm. If office unattended, please leave a message via phone – 9435 1543 or on a note at the office window or email at greensborough@cam.org.au, and we will contact you as soon as we can.

Dear Pope Francis J FRA This warm and charming collection of kids' letters and the Pope's simple but meaningful responses help the pontiff seem more human and God more accessible. *Borrow from our library.*

Library catalogue available online at cloud.collectorz.com/247780

St Mary's Parish News Continued:

IMPORTANT NOTICE—Until further notice there is no running water in the Parish House. Tea-making facilities and use of toilets not available for meetings held in the house. Apologies for the inconvenience, but all the plumbing in the house is to be replaced.



The Big Group Hug is a local charity supporting disadvantaged families in the community and beyond. They provide donated socks, jocks, singlets and pyjamas to help parents care for children, from newborn to 12 years . Items can be left in the gathering space. Collecting until the end of term two. Any questions please contact, Mary - 0419 554500. See noticeboard.

URGENT – JOB NEEDED If you are a business owner, or know of a business which might be able to assist, please contact Jacinta Bright at the parish office – 9435 1543. Rita is a parishioner, who came here from South Sudan a number of years ago. Rita is a widow with seven children, the youngest now being at school. Rita is looking for work as a cleaner, or night filler, or something like that. Your assistance with this would be very much appreciated.

ST MARY'S PARISH LIBRARY The Library is about to conduct a stock take. Can any borrowers who have overdue items please return them as soon as possible? Thank you Library Committee

PLEASE NOTE: There has been a series of burglaries involving breaking into presbyteries and parish churches in nearby suburbs. I strongly encourage and request that you be vigilant with security if you have access to the church or parish house.

MELBOURNE CATHOLIC MAGAZINE— available in the Church Shop at \$4. This month's issue talks about child safety, the story of St Vincent's hospital in Melbourne and some film reviews. Well worth a read.

WELCOME Parishioners are invited and always welcome to come in and make a cuppa and have a biscuit in the gathering space kitchen. We ask that you please clean up after use. Thank you and welcome.

FRIDAY MORNING PRAYER—8am until 9am-parish house using Ignatian style prayer, contact Jacinta Bright - parish office on 9435 1543.

PARKING FOR ALL MASS TIMES While there are several disabled parking positions, there are some members of our community who have special needs on a temporary or permanent basis and do not qualify for a disabled permit. With this in mind we are asking that at Mass times, **the 12 parking spaces closest to the Church be left free** for them to use. We thank you for your anticipated co-operation.

WILLIAM STREET PEDESTRIAN GATE - will be locked other than between 8.00– 9.15am and 3.30- 4.30pm. If you wish to enter the property during these times it is locked, please use code **2100**. Please re-lock after you have entered.

Exposition of Blessed Sacrament first and third Friday of every month, from 10.00am to 9.00pm or starting at 11.00am when there is no Mass - every 2nd, 4th and 5th Friday 8.00-9.00am.

ARE YOU LOOKING FOR TIME OUT from a busy lifestyle? Join silent adoration before the Blessed Sacrament at the Irish Martyr's Chapel Loyola College Wednesdays 5.30-6.30pm. All welcome-queries Brian Rooney 0413 885 168.

Community News

CATHOLIC FRIENDSHIP 40+: LUNCH IN GLEN IRIS—Sunday 24 June, 1–3pm. Giorgios Restaurant, corner High Street and Glenferrie Road, Malvern. Melbourne Catholic Friendship 40+ (formerly Solo Catholics) invites you to a delicious Sunday lunch at Giorgios. The group holds regular social events and faith-based talks at different venues across Melbourne where people can meet, socialise and form lasting friendships. All welcome. **Details and bookings:** Simon on 0418 302 046

What's Happening in St Mary's Parish?

Vision Statement "To be a vibrant Christian community engaging with the world"

LITURGY OF THE WORD WILL BE CELEBRATED ON: **18th to 21st June** inclusive as Fr. Dong will be attending a Clergy Conference and **23rd June** as Fr. Dong will be attending Ordinations of Priesthood. Thank you.

CONFIRMATION CANDIDATES We welcome Confirmation candidates and their families at Masses this weekend as they are presented to our Parish in preparation for receiving the Sacrament of Confirmation on Sunday July 22. Our prayers and support are with you all.

THE CANDIDATES have written letters to parishioners. Students have written about themselves and their confirmation preparation. Please take a letter and share your experience. Letters are available from basket on the table in the Gathering Space. Thank you-Year Six teachers.

PARISH PASTORAL COUNCIL NEWS – Our new Parish Pastoral Council met this Wednesday 14 June with parish representatives Nick Scully, Sue Hollowood, Lauren Hartigan, Fiona Scott, Raj Joseph, Susan Kempen (new Chairperson) and Kristel Roxas along with a representative from the School Advisory Board and ex-officio members Frs Steven Rigo and Dong Tran, Pastoral Associate Jacinta Bright and School Representative Lisa Murray. Many thanks to Kristel for serving as Deputy Chairperson and Chairperson over the past two years. At the meeting, there was discussion of the ongoing release of information from our parish survey, consideration of our parish's involvement in preparation for the Australian Catholic Church's 2020 Plenary Council (more information soon) and selection of a new PPC Chairperson. PPC meetings are scheduled to be on the second Wednesday of each month. Information about PPC members will be updated soon and so that you can recognise and approach members with any queries, concerns or suggestions. You are also invited to contact the Council through the parish office and ask that you might pray for the work of the PPC.

ALPHA IS COMING TO ST MARY'S AND WE NEED YOUR HELP! – Do you make a great lasagne or an amazing casserole? A fantastic pasta bake or a warm hearty soup? Perhaps you can provide a delicious dessert, cake or slice to have with coffee? The Alpha team is on the search for some talented cooks to help us cater for our weekly meetings from July 17th to September 25th. Don't think you can do each week? That's fine! We'd still love to try some of that amazing food. Any assistance appreciated. If you think you could help, please contact Jo Giudice 0411 045 572.

CONGRATULATIONS TO FRANCES BONNICI for her OAM; Queen's Birthday award in recognition of her work with the Maltese community and with education.

SILENCE IN THE LITURGY In response to comments expressed in the Parish survey, and in line with General Instructions of the Roman Missal, a period of silence will follow the Homily. This will provide an opportunity for personal reflection on the Word of God, and complement the silent periods we already observe after the first and second readings. The first collection will be taken up after this period of reflection.

AN INVITATION FOR THE WOMEN OF OUR CHURCH Catholic Women Speak seeks to bring Catholic women's voices into dialogue with others in the Catholic Church. CWS states they "believe in the creativity of struggle and acceptance that comes from learning to respect our differences. We regard these as vital aspects of the process of discovery and transformation that brings us together in our faith." One current activity is described as follows: "Catholic Women Speak and Voices of Faith have collaborated to write an open letter to Pope Francis appealing for greater participation of and dialogue with women in the worldwide Church." As you will see, **the letter is supportive of Pope Francis and seeks to open up a dialogue** - not provoke a confrontation! Nevertheless, we believe that it is important to express our concerns about the language used to describe women, and this is a way of gently expressing those concerns. Here is the link to the website with the letter and the signature form: <https://catholicwomenspeak.com/>. If you have any questions or would be interested in participating in a similar dialogue, here in the parish, please contact Jacinta Bright, Pastoral Associate, on 9435 1543.

2018 ST VINCENT DE PAUL WINTER APPEAL—The **Winter Appeal to be conducted this weekend of 16/17 June** is Vinnies' major mid-year appeal. Your donations in past years have been distributed to support local families in need – donations for which those families and we, the Greensborough Conference, are heartily thankful. Again this year, we are asking for cash or credit card donations, to provide direct financial support to families, to meet their immediate needs. Please place your donations in the envelopes provided at each Mass on 16/17 June and put them in the leaving collection. More envelopes will be provided in the gathering space if required. Collection bins will also be provided on that weekend for any non-perishable food items which might be donated. Thank you. Ian Fraser, President.

LADIES AUXILIARY next meeting **Wed 20 June -10.15am** in the Gathering Space. Wheat-filled bags are still available at \$5—\$10 each. Enquiries phone Maureen 9435 5906 Lucy 9435 6990.

Keep in touch with the school—pick up a copy of the Candela from racks in the Gathering Space.

SOCIAL JUSTICE GROUP NEWS—NATIONAL REFUGEE WEEK commences on Sunday 17th June. We especially think of those refugees who will lose benefits over the coming weeks, due to a change in Government policy. We are grateful for their contribution to our community. We remember Refugees in many countries who are having to leave their homes.

The **ASYLUM SEEKER RESOURCE CENTRE** provided food for 700 Refugees and Asylum Seekers last week. They nearly ran out. Recently the Government discontinued a small allowance given to Asylum Seekers, but gave them work rights. They have a week to find a job. They are desperate. Can you help with food?

BEANIES, SCARVES AND GLOVES are needed by the Asylum Seeker Resource Group for their people, who are facing the coming winter without enough warm clothing. All donations to be placed in the box in the Gathering Space.

First Reading Ez 17:22-24*I have made the small tree great.*

The Lord says this:

'From the top of the cedar,
from the highest branch I will take a
shoot
and plant it myself on a very high
mountain.
I will plant it on the high mountain of
Israel.
It will sprout branches and bear fruit,
and become a noble cedar.
Every kind of bird will live beneath it,
every winged creature rest in the shade
of its branches.
And every tree of the field will learn that
I, the Lord, am the one
who stunts tall trees and makes the low
ones grow,
who withers green trees and makes the
withered green.
I, the Lord, have spoken, and I will do it.'

Responsorial Psalm**Ps 91:2-3. 13-16. R. see v.2***(R.) Lord it is good to give thanks to you.*

1. It is good to give thanks to the Lord
to make music to your name, O Most
High,
to proclaim your love in the morning
and your truth in the watches of the
night. (R.)
2. The just will flourish like the palm-tree
and grow like a Lebanon cedar. (R.)
3. Planted in the house of the Lord
they will flourish in the courts of our God,
still bearing fruit when they are old,
still full of sap, still green,
to proclaim that the Lord is just.
In him, my rock, there is no wrong. (R.)

Second Reading 2 Cor 5:6-10*Whether we are living in the body or exiled from it, we are intent on pleasing the Lord.*

We are always full of confidence when we remember that to live in the body means to be exiled from the Lord, going as we do by faith and not by sight - we are full of confidence, I say, and actually want to be exiled from the body and make our home with the Lord. Whether we are living in the body or exiled from it, we are intent on pleasing him. For all the truth about us will be brought out in the law court of Christ, and each of us will get what he deserves for the things he did in the body, good or bad.

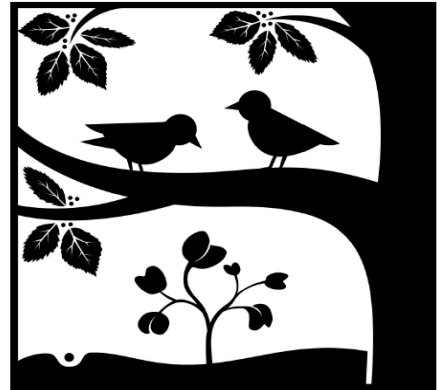
Gospel Acclamation**Alleluia, alleluia!****The seed is the word of God, Christ is the sower;****all who come to him will live for ever.****Alleluia!****Gospel Mk 4:26-34***The mustard seed, the smallest of all the seeds, grows into the biggest shrub of all.*

Jesus said to the crowds, 'This is what the kingdom of God is like. A man throws seed on the land. Night and day, while he sleeps, when he is awake, the seed is sprouting and growing; how, he does not know. Of its own accord the land produces first the shoot, then the ear, then the full grain in the ear. And when the crop is ready, he loses no time; he starts to reap because the harvest has come.'

He also said, 'What can we say the kingdom of God is like? What parable can we find for it? It is like a mustard seed which at the time of its sowing in the soil is the smallest of all the seeds on earth; yet once it is sown it grows into the biggest shrub of them all and puts out big branches so that the birds of the air can shelter in its shade.'

Using many parables like these, he spoke the word to them, so far as they were capable of understanding it. He would not speak to them except in parables, but he explained everything to his disciples when they were alone.

The psalm responses are from the English Translation of the Lectionary for the Mass © 1981 International Committee on English in the Liturgy Inc. (ICEL). All rights reserved. The psalm texts, from The Psalms, A New Translation, © 1963 by The Grail, England and used by permission of the publishers. The scriptural quotations are taken from the Jerusalem Bible, published and copyright 1966, 1967 and 1968 by Darton Longman and Todd Ltd and Doubleday & Co Inc, and used by permission of the publishers.
© 2017 Creative Ministry Resources Pty Ltd
All use must be in accordance with your user licensing agreement.

**Reflection by Fr Michael Tate**

A peasant in Galilee would hope for a return of 7:1 when sowing seed for a crop. So when Jesus pictures the Kingdom of God as a wonderful harvest (returning 100:1 as he put it in another parable), his peasant listeners would envisage a future without hunger, without servitude to rapacious landlords and money-lenders. A true liberation (such as Mary sang of in the Magnificat)!

Naturally, they and we want to know when this new way of life, this fulfilling of the Kingdom of God, will come about. Our Lord replies: 'Be patient. Your job is to sow the seed. Something will happen out of all proportion to your part in the process, just like the disproportion of the mustard seed to a mustard bush' (which he exaggerates into a tree sheltering birds).

God's creative power worked in the depths of stony ground to raise up the Gospel Seed who is Jesus Christ. From that, a community has grown which, at its best, leads to a fair and just distribution of the world's resources, as Pope Francis insists is a major test of authenticity of our claim to be Christian.

We could take a moment to pray for the courage to sow the seed of the Gospel whenever an opportunity presents itself, and the patience to await the germinating power of the Resurrection to create the Tree of Life such that all peoples 'can shelter in its shade'.

mtate@bigpond.com